

SPREADTEC



**DUST SUPPRESSION
WATER TANKER - DS8**

DESIGNED & ENGINEERED FOR HEAVY DUTY WORKLOADS

SpreadTec's chassis mounted DS8 is a must have for construction worksite environmental compliance purposes to reduce airborne dust particles and to meet strict environmental emission standards in urban, rural and sensitive areas.

It combines performance when coupled to a self-propelled vehicle suitable for dust suppression, site, road & machinery cleaning, soil stabilisation & ground preparation applications, drainage solutions, fire control & water management capabilities.

Importantly the tanker suppression unit controls dust to improve site air quality, personnel safety, visibility & reducing dust near sensitive zones.

The fully assembled water tanker mounted on a Wacker Neuson DV90 is ready for work, maximising daily output and simplifying on-site operations. It carries up to 8,000 litres of water in the tank which is equipped with rear pressurised spray heads, pressure hose reel/nozzle, suction pump systems along with gravity fed dribble bar for dust control water distribution management.

The powerful hydraulic self-priming water suction pump allows for filling from a water source using a 3" suction hose with intake filter/strainer. The unit is fitted with three rear separate spray head nozzle deflector plates to reduce the amount of water required for dust suppression.

Control valves regulate the pressure and flow rate of water to give an even spread pattern with an adjustable spread width up to 14m and variable flow rates of 200 to 800 litres/minute.

The in-house designed software control system plays a key role in automating, monitoring, and optimising water usage and spraying operations on a worksite. It features a timer function to ensure that the pumps are not left running for an extended time inadvertently & comes with a range of safety interlocks for safe operation such as a low & high level sensor to automatically control filling and emptying. An in-cab touchscreen controls the suction pump, dribble bar, splash plate deflector nozzles heads x 3, tank level indicators and hose reel/nozzle wash down features.

The water tanker is demountable and can be removed and comes with tank stands for when not in use and the dumper tipper body can be refitted to the DV90.

SPREADTEC



TECHNICAL HIGHLIGHTS

- + 8,000 litre fully welded tank with internal perforated surge & wave baffles.
- + Main centrifugal pressure pump for the feed of spray head deflector nozzle spray heads x 3 & wash down hose reel & jet nozzle.
- + Self-priming suction pump for filling the tank from a lagoon/lake/tanker/drains.
- + Spray nozzle deflector nozzle plates with three individual spray heads each independently controlled from 12v electric butterfly valves using the in-cab control monitor.
- + Dribble bar is gravity fed & is controlled using a 12v electric butterfly valve to turn the flow of water on and off to the dribble bar.
- + Wash down manual retractable hose reel & adjustable jet nozzle.
- + Low center of gravity tank design.
- + Low-level and high-level water tank sensors to automatically control filling and emptying.



PRODUCT FEATURES

- + Main Hopper: 4 mm mild steel. Fully seam welded.
- + Internal perforated tanker baffles to reduce water surges when braking, changing direction & bouncing.
- + Demountable: easily converted back to dumper unit. Pin and bolt system for simple transfer.
- + Tank stands – each tank supplied with demountable stands for safely leaving the tanker on the ground when not fitted to the unit.
- + Stone Trap – each tank is fitted with an easy access stone, mud & rubbish trap for ease of cleaning.
- + Easy accessible filter fitted to dribble bar.
- + Top quick fill point with splash guard.
- + Extension cable to make use of existing Wacker Neuson camera system. Can be easily fitted back to dumper when tank system not fitted.
- + Extension cable supplied to make use of existing lighting and safety system: reversing sensor, lighting, camera & buzzer.
- + Water level sight tube gauge on front of tank for driver monitoring.
- + No dangerous, unreliable or easily damaged PTO like tractor & trailed tankers.
- + More compact than a similar tractor & tanker combination, easier to transport two by lowbed.
- + Multipurpose unit easily converted back to dumper body or flat deck body.
- + Easy to operate using existing ticketed dumper and ADT drivers.



TECHNICAL FEATURES



1 HYDRAULIC DRIVEN WATER PUMP

Designed specifically for self-propelled water tanker applications, the hydraulically driven pressure water pump is robust and built for the most demanding applications & environments.

FEATURES

- + High performance
- + Cast iron centrifugal volute pump type with impeller

- + Spline drive couper shaft to hydraulic pump
- + Durable carbon ceramic design
- + Wide operating range, ideal for variable flow hydraulic systems
- + Low maintenance design
- + Chromoly shaft
- + Durable powder coating



TECHNICAL FEATURES



HYDRAULIC PUMP ADVANTAGES

EFFICIENCY

Highly efficient wet end, providing more water with less power and minimum water turbulence thanks to the offset volute.

EASY INSTALLATION

Features a compact footprint and simple yet flexible 3" pipe coupling options.

RELIABILITY

Designed to perform

LARGE OVERSIZED BEARINGS

Large cross-section shaft, a single grease point, and an extreme-duty mechanical seal.

MAIN SUCTION PUMP

Hydraulically Driven, self-priming polypropylene transfer pump

FEATURES	
MAXIMUM FLOW RATE	1,300 LPM @ 50 LPM OF OIL FLOW
MAXIMUM PRESSURE	58 PSI
WN DV90 SELF PROPELLED UNIT	MAX OIL FLOW 50 LPM.
FILL RATE	8,000 LITERS APPROX. 11 MINUTES

PRECISION

Alignment of the hydraulic motor and water pump shafts is critical to low operating temperatures and long life. The one-piece frame, one-piece shaft, and balanced impeller ensure reliable operation.



TECHNICAL FEATURES



2 SPRAY NOZZLE DEFLECTOR HEADS

The SpreadTec spray bar kit is an ideal solution for setting up a water truck that offers maximum versatility and durability. Manufactured from 80mm steel pipe and hot-dip galvanised to protect from corrosion.



REAR OUTLETS

- + Left, centre and right spray electric control valves & splash deflector nozzle plates

FEATURES

- + Made from marine grade aluminium with a durable hard anodised coating

- + Manual adjustable spray bands with handle makes spray pattern adjustments left & right quick & easy
- + 120-degree spray angle with the spray band and 180-degrees without
- + Efficient and suitable spray head for low and high-pressure pumps
- + Up to 14 metres spray width with three spray heads.



TECHNICAL FEATURES

3 WASH DOWN HOSE REEL

Manual retractable water hose reel & adjustable jet nozzle – 20 mtr length

The manual rewindable hose reel is designed with dust, harsh conditions and environments in mind. Made from roll-formed mild steel with a robust powder-coated finish.

FEATURES

- + Heavy-duty steel construction
- + Full flow swivels
- + High-quality synthetic rubber hose with swaged fittings
- + Spring loaded locking pin
- + Modular design for easy service
- + Adjustable fire hose nozzle supplied

4 DRIBBLE BAR

At the touch of a button using the in-cab display, the 12-volt electric butterfly valve is used to open the water supply to the 2.3 mtr working width dribble bar.

The gravity fed dribble bar is made from 90mm diameter tubing. Bolted blanking caps at each end for easy clean out access.

IN-CAB ELECTRONIC CONTROL SYSTEM



FEATURES

- + The Control Screen illustrates to the operator when the tank has reached full capacity and when the tank has reached its empty state.
- + If the filling suction pump is active on timer when the system detects the tank is full, the suction pump is switched off automatically.
- + Likewise, if the wash down hose is active on timer when the system detects the tank is empty, the pump is switched off automatically.
- + The timer function is to ensure that the pumps are not left running for an extended time inadvertently.
- + The main hydraulic control can be also commanded from the joystick in the cab. This will either control the suction pump or the spray (spraybar heads x 3 & hose nozzle) pressure pump depending on which function is selected on the screen.
- + The splash plates and dribble bar deactivate on the low level being reached. These can be re-enabled if the operator would like to run the tank out completely. Each splash plate can be individually controlled for doing single sided LH or RH, middle or full width spraying.
- + The system also features a remote rear stop control. This allows the operator to temporarily disable and re-enable the filling pump when at the rear of the machine. This can be useful when filling from multiple smaller filling holes or water sumps.



PUMPING
TIMER DURING
FILLING/
WASHDOWN



WASH
DOWN
HOSE



SUCTION
PUMP



DRIBBL
BAR
CONTROL



COLLECTIVE
SPLASH
CONTROL



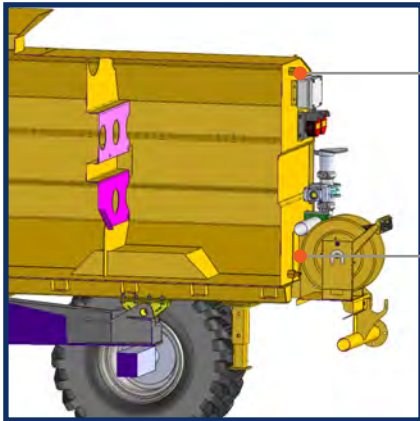
INDIVIDUAL
SPLASH
CONTROLS



TANK
LEVEL
INDICATORS



PRODUCT FEATURES



1 > HIGH & LOW SENSOR

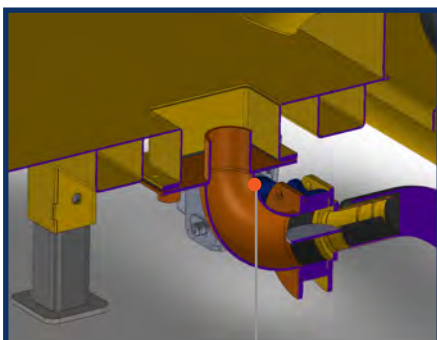
2 > TOP FILL POINT SPLASH GUARD



3 > DEMOUNTABLE: PIN & BOLT SYSTEM



4 > TANK STANDS



5 > STONE TRAP



TECHNICAL SPECIFICATIONS

DIMENSIONS

MODEL	DS8
(A) WIDTH (mm)	2,417
(B) HEIGHT TANK (Mounted) (mm)	2,873
(C) OVERALL HEIGHT TANK (Dismounted) (mm)	2,238
(D) OVERALL LENGTH TANK (mm)	3,257
(E) OVERALL LENGTH (mm)	5,520
(F) OVERALL HEIGHT (mm)	3,120



SPREADTEC

www.spreadtec.net

